



# 18th Annual Neurotrauma Symposium

Monday, December 2, 2019

Byers Auditorium, Genentech Hall  
UCSF Mission Bay Campus, San Francisco

Register online after October 1, 2019 at:

[www.brainandspinalinjury.org](http://www.brainandspinalinjury.org)

**For information contact:**

Lawrence Chyall, MSN, RN  
(628) 206-4268

[Lawrence.chyall@sfdph.org](mailto:Lawrence.chyall@sfdph.org)

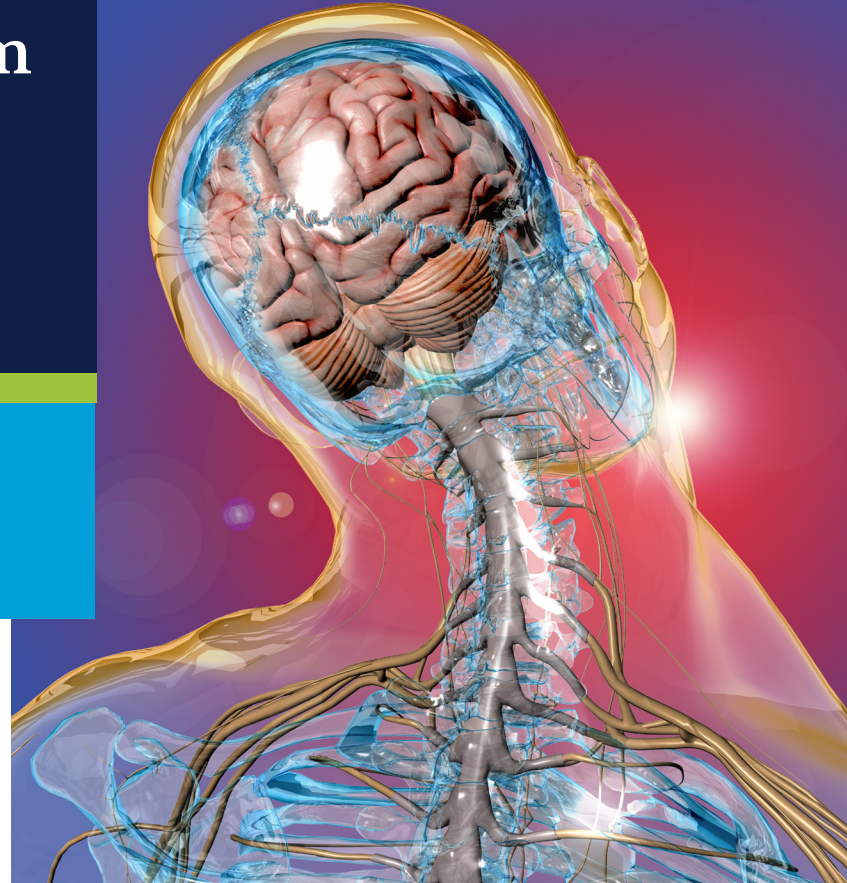
Julia Thompson Gallego, MS, ACNP-BC  
(628) 206-3226

[Julia.thompsongallego@sfdph.org](mailto:Julia.thompsongallego@sfdph.org)

**UCSF** Weill Institute for  
Neurosciences  
Brain and Spinal  
Injury Center



**ZUCKERBERG  
SAN FRANCISCO GENERAL**  
Hospital and Trauma Center





This year's symposium is a dynamic 1-day conference that will focus on the latest discoveries as they relate to research in traumatic brain injury and spinal cord injury based on findings gleaned from TRACK TBI, TRACK SCI and CAMPER studies. There will be a focus on understanding the new management strategies being implemented at the bedside in the care of severe TBI and SCI patients.

Special focus will be given to some holistic measures that can enhance the recovery after brain injury. Case studies will be presented of both TBI and SCI patients that will help providers understand the comprehensive approach needed to optimize the recovery of these severely injured and complicated patients. Ethical dilemmas involving complex decisions will be presented. The course is designed for all disciplines and clinicians involved in trauma care including physicians, nurses, neuropsychologists, physical, speech, and occupational therapists, social work, case managers, and emergency medical personnel.

**Register Today!**  
**[www.brainandspinalinjury.org](http://www.brainandspinalinjury.org)**

*Advancing Health Worldwide in Brain and Spinal Injury*

**For information contact:**

Lawrence Chyall, MSN, RN  
(628) 206-4268

[Lawrence.chyall@sfdph.org](mailto:Lawrence.chyall@sfdph.org)

Julia Thompson Gallego, MS, ACNP-BC  
(628) 206-3226

[Julia.thompsongallego@sfdph.org](mailto:Julia.thompsongallego@sfdph.org)